



Cavanaugh Macdonald
CONSULTING, LLC

The experience and dedication you deserve



**CITY OF POMPAÑO BEACH
GENERAL EMPLOYEES' RETIREMENT SYSTEM**

**Actuarial Valuation Report as of
October 1, 2021**

REPLACES REPORT DATED JANUARY 12, 2022





TABLE OF CONTENTS

	<u>Page Number</u>
<u>Letter to the Board of Trustees</u>	1
<u>Liabilities</u>	
Table I Summary of Valuation Results	5
Table II Gain and Loss Analysis	7
Table III Additional Disclosures	9
Table IV Present Value of Accrued Benefits (Plan Assumptions)	10
Table V Information Req. by Florida Statute (Chap.112)	11
Table Va Unfunded Liability Bases	14
<u>Assets</u>	
Table VIa Development of Market Asset (Gain)/Loss	17
Table VIb Market Asset Reconciliation	19
Table VII Historical Asset Information	20
Table VIIa Revenues By Source and Expenses by Type	21
Table VIII Contributions vs. Fund Payouts	22
<u>Data</u>	
Table IX Summary of Member Data	23
Table IXa Active Data	24
Table IXb Retiree Data	27
Table IXc Data Reconciliation	28
Table IXd Age-Service Salary Table	29
Table X Historical Contributions	30
<u>Risk Considerations</u>	
Table XI Risk Considerations (ASOP 51)	31
<u>Plan Assumptions</u>	
Table XII Plan Assumptions and Methods	33
<u>Plan Provisions</u>	
Table XIII Plan Provisions	37
Table XIIIa Plan Amendments	46



Cavanaugh Macdonald

CONSULTING, LLC

The experience and dedication you deserve

February 7, 2022

Board of Trustees

City of Pompano Beach General Employees' Retirement System

555 South Andrews Avenue, Suite 106

Pompano Beach, Florida 33069

Dear Members of the Board:

This report presents the results of the actuarial valuation of the City of Pompano Beach General Employees' Retirement System ("Plan") for the plan year. The purpose of this report is to provide a summary of the funded status of the plan as of October 1, 2021 and to determine the minimum required contribution amount for the 2022/2023 fiscal year. In addition, this report provides a record of any plan amendments or other plan changes affecting the financial status of the fund. Our calculations were prepared based on member data and financial information provided by the Retirement System.

Since the previous valuation, the benefit multiplier was increased from 2.75% to 3.00% for Tier 1 members and Tier II members who have paid the additional 3% member contribution for past years of service. This change only applies to members who retire or enter the DROP on or after October 1, 2021. In addition, the COLA was increased from 2% to 3% per annum for Tier 1 members participating in the DROP on October 1, 2021 and all active Tier 1 members who retire on or after October 1, 2021. Also, members who are eligible to retire or enter the DROP, but who have not yet elected to retire or enter the DROP, may elect to purchase additional service time needed to round-up his/her current year of service prior to retiring or entering the DROP.

Summary of Valuation Results

The Retirement System receives contributions from the City of Pompano Beach, Broward Sheriff's Office (BSO) and from active members. All members contribute 10.0% of compensation. In addition, the City contributes the required member contributions on behalf of the elected/appointed members who participate in the System. These contributions are considered member contributions and are not reflected in the required minimum City contribution. In determining the City's and the County's contribution requirement we have included two alternatives. The first includes interest to reflect that the City will make quarterly contributions throughout the fiscal year. The second reflects that the City will contribute a single lump sum payment on December 31, 2022. Both contribution alternatives anticipate that the BSO will make bi-weekly contributions throughout the fiscal year.

3550 Busbee Pkwy, Suite 250, Kennesaw, GA 30144

Phone (678) 388-1700 • Fax (678) 388-1730

www.CavMacConsulting.com

Offices in Kennesaw, GA • Bellevue, NE



Quarterly Contributions

The total required annual contribution for the 2022/2023 fiscal year from all sources payable based on a quarterly payment schedule beginning October 1, 2022 is \$21,975,842. The amount of the City/BSO contributions varies from year to year. Member contributions are equal to 10.00% employees' projected payroll. After taking into account expected member contributions of \$4,184,677, the total required contribution from the City/BSO is \$17,791,165 or 42.52% of projected payroll. Of this amount the City is expected to contribute \$17,520,568 and BSO is expected to contribute \$270,597. In comparison, the required City/BSO contribution for the 2021/2022 fiscal year was \$11,240,951, or 30.57% of projected payroll.

Single Lump Sum Payment

The total required annual contribution for the 2022/2023 fiscal year from all sources payable as a single lump sum payment on December 31, 2022 is \$21,786,156. The amount of the City/BSO contributions varies from year to year. Member contributions are equal to 10.00% of employees' projected payroll. After taking into account expected member contributions of \$4,184,677, the total required contribution from the City/BSO is \$17,601,479 or 42.06% of projected payroll. Of this amount the City is expected to contribute \$17,331,437 and the BSO is expected to contribute \$270,042.

The plan provides a 2% COLA each year for Tier 1 members who retired before October 1, 2021 or 3% COLA for Tier 1 members who retire on or after October 1, 2021. An additional 1% COLA is applied if there is a cumulative net experience gain for the year and the City's cost for the year is \$0 after payment of the additional COLA. In addition, the present value of the additional COLA cannot be more than the cumulative gains that occurred since inception of the COLA. Since a required City contribution is due, no variable COLA will be paid to these members this year.

Members hired on or after June 8, 2011 and before December 8, 2020 who have not elected to pay the additional 3% member contribution will be eligible for a COLA on their fifth anniversary of retirement for this period of service. No increase is given for eligible retirees under 55 on October 1st. A 1% increase is given for eligible retirees between 55 and 64. A 2% increase is given for eligible retirees 65 or older. A variable increase (of not more than one percent) will be granted when the plan is sufficiently funded. Since there is no cumulative actuarial gain, no variable increase will be paid to these members this year.



Actuarial gains and losses result when the actual experience of the plan (such as asset return, pay increases, turnover, deaths, etc.) is different from that expected by the actuarial assumptions. The plan's unfunded liability was projected to be \$80,607,012 as of October 1, 2021, taking into account contributions from the City and the County of \$10,864,448. The actual unfunded liability is \$109,697,944. The increase of \$29,090,932 is mainly attributable to the passage of Ordinance Nos. 2021-31, 2022-09, 2022-10, and 2022-12 and reducing the assumed investment return from 7.50% to 7.35%. These losses were partially offset by experience gains for the 2020/2021 plan year. The plan amendments and discount rate assumption change resulted in increases in the unfunded liability of \$28,449,711 and \$5,651,435, respectively. A detailed analysis of the gain and loss is presented in Table II. The total increase in City/County contribution to amortize the unfunded liability is \$3,501,742 per year. A summary of the amortization payments is presented in Table Va. The unfunded liability is amortized over a level percentage of payroll assuming a payroll growth assumption of 2.40% for amortization bases established prior to October 1, 2017. Amortization bases established on or after October 1, 2017 are amortized on a level dollar basis.

The valuation is based on a series of actuarial assumptions, including an interest rate of 7.35% per year and an annual payroll growth assumption of 2.40%. Table XI outlines the mortality assumptions used in the report.

A summary of the results of the valuation and the contribution requirements is presented in Table I. The disclosure information required by Chapter 112, Florida Statutes, is presented in Table V. Tables VII and X provide information about the fund's assets and historical contributions. Table VIb provides an asset reconciliation between October 1, 2020 and October 1, 2021. Table VIa provides a breakdown of the fund assets by investment type and the calculation of the actuarial value of assets. Tables VII, VIIa, VIII provide a historical record of the growth, expenses, revenues, annual returns and contributions of the fund. Tables IX and IXa through IXd provide a variety of useful information concerning the participant population. The assumptions used in the valuation are outlined in Table XII. Provisions of the plan are set forth in Table XIII.

This actuarial valuation was prepared and completed by us or under our direct supervision and we acknowledge responsibility for the results. To the best of our knowledge, the results are complete and accurate and, in our opinion, the techniques and assumptions used are reasonable and meet the requirements and intent of Part VII, Chapter 112, Florida Statutes. There is no benefit or expense to be provided by the plan and/or paid from the plan's assets for which liabilities or current costs have not been established or otherwise taken into account in the valuation. All known events or trends which may require a material increase in plan costs or required contribution rates have been taken into account in the valuation.

In order to prepare the results in this report we have utilized appropriate actuarial models that were developed for this purpose. These models use assumptions about future contingent events along with recognized actuarial approaches to develop the needed results.



We note that as we are preparing this report, the world is in the midst of a pandemic. We have considered available information but do not believe that there is yet sufficient data to warrant the modification of any of our assumptions. We will continue to monitor the situation and advise the Board in the future of any adjustments that we believe would be appropriate.

Future actuarial results may differ significantly from the current results presented in this report due to such factors as the following: plan experience differing from that anticipated by the economic or demographic assumptions; changes in economic or demographic assumptions; increases or decreases expected as part of the natural operation of the methodology used for these measurements (such as the end of an amortization period or additional cost or contribution requirements based on the plan's funded status); and changes in plan provisions or applicable law. Since the potential impact of such factors is outside the scope of a normal annual actuarial valuation, an analysis of the range of results is not presented herein.

Respectfully submitted,

A handwritten signature in blue ink that reads 'Todd B. Green'.

Todd B. Green, ASA, EA, FCA, MAAA
President
Enrolled Actuary No. 20-8883

A handwritten signature in blue ink that reads 'Micki R. Taylor'.

Micki R. Taylor, ASA, EA, FCA, MAAA
Senior Actuary
Enrolled Actuary No. 20-5975

TBG:jw



SUMMARY OF VALUATION RESULTS

TABLE I

	As of October 1, 2020	As of October 1, 2021
1. Number of Participants		
a. Active Participants		
i. City and BSO Employees	494	511
ii. Elected and Appointed Officials	8	9
iii. Senior Management	18	21
iv. Sub-total	520	541
b. Deferred Vested Participants	26	29
c. Retired Participants:		
i. Participants in DROP	44	51
ii. Non-disabled	344	340
iii. Disabled	14	11
iv. Beneficiaries	53	52
v. Sub-total	455	454
d. Total Participants	1,001	1,024
2. Total Annual Payroll		
a. Elected Officers	\$921,761	\$1,076,717
b. Non-elected members (Plan 1)	\$17,858,516	\$35,449,731
c. Non-elected members (Plan 2)	\$17,131,260	\$4,339,533
d. Total	\$35,911,537	\$40,865,981
3. Total Projected Payroll	\$36,773,414	\$41,846,765
4. Total Retired Member Benefits	\$15,086,782	\$15,617,450
5. Derivation of Unfunded Accrued Liability (UAL)		
a. Present Value of Future Benefits	\$336,856,454	\$406,198,157
b. Present Value of Future Normal Cost	(\$49,047,791)	(\$67,807,017)
<i>City Portion</i>	(\$24,772,490)	(\$41,538,856)
<i>Member Portion</i>	(\$24,275,301)	(\$26,268,162)
c. Actuarial Accrued Liability (AAL)	\$287,808,663	\$338,391,140
d. Actuarial Value of Assets	(\$205,854,724)	(\$228,693,196)
e. Unfunded Accrued Liability (c. + d.)	\$81,953,939	\$109,697,944



SUMMARY OF VALUATION RESULTS

TABLE I

	Fiscal Year 2022	Fiscal Year 2023
6. Annual Cost (Payable Quarterly 1st Payment 10/1)		
a. Normal Cost	\$6,619,604	\$9,506,204
b. Payment to Amortize Unfunded Liability	\$6,316,812	\$9,818,554
c. Administrative Expenses	\$572,521	\$613,079
d. Interest Adjustment	\$1,409,355	\$2,038,005
e. Total (a. + b.+ c.+ d.)	\$14,918,292	\$21,975,842
f. Expected Member Contributions	\$3,677,341	\$4,184,677
g. Expected City/County Contribution	\$11,240,951	\$17,791,165
h. Total (f. + g.)	\$14,918,292	\$21,975,842
7. Annual Cost (Payable as a Single Lump Sum on 12/31)		
a. Normal Cost	\$6,619,604	\$9,506,204
b. Payment to Amortize Unfunded Liability	\$6,316,812	\$9,818,554
c. Administrative Expenses	\$572,521	\$613,079
d. Interest Adjustment	\$1,278,120	\$1,848,319
e. Total (a. + b.+ c.+ d.)	\$14,787,057	\$21,786,156
f. Expected Member Contributions	\$3,677,341	\$4,184,677
g. Expected City/County Contribution	\$11,109,716	\$17,601,479
h. Total (f. + g.)	\$14,787,057	\$21,786,156
8. Annual Cost (as a % of projected payroll)		
a. Quarterly Basis		
i. Total Required Contribution	40.57%	52.52%
ii. Expected Member Contributions *	10.00%	10.00%
iii. Expected City/County Contribution	30.57%	42.52%
b. Single Lump Sum Basis		
i. Total Required Contribution	40.21%	52.06%
ii. Expected Member Contributions *	10.00%	10.00%
iii. Expected City/County Contribution	30.21%	42.06%

* Non-Elected members contribute 10.0% of payroll. The City contributes 10.0% of payroll on behalf of elected/appointed members.

**GAIN AND LOSS ANALYSIS****TABLE II****UNFUNDED ACCRUED ACTUARIAL LIABILITY (GAIN) / LOSS ANALYSIS**

1. Actual Unfunded Accrued Actuarial Liability as of October 1, 2020	\$81,953,939
2. Plan Sponsor Normal Cost for this Plan Year (including expenses)	\$3,514,784
3. Interest on items 1 and 2 $[(1+2) \times 7.5\%]$	\$6,410,154
4. Plan Sponsor Contribution for this Plan Year:	(\$10,864,448)
5. Interest on item 4 $[4 \times 7.5\% \times .5]$	(\$407,417)
6. Changes due to:	
a. Assumption changes	\$5,651,435
b. Plan amendments	\$28,449,711
c. Funding Method	\$0
d. Actuarial (Gain) / Loss	(\$5,010,214)
7. Actual Unfunded Accrued Liability as of October 1, 2021: (1. + 2. + 3. + 4. + 5. + 6.)	\$109,697,944
8. Items Affecting Calculation of Unfunded Accrued Actuarial Liability:	
a. Plan provisions reflected in the unfunded accrued liability (see Table XIII)	
b. Plan amendments reflected in item 6.b. above (see Table XIIIa)	
c. Actuarial assumptions and methods used to determine actuarial accrued liability (see Table XII)	
d. Changes in actuarial assumptions and methods reflected above	

B. ASSET (GAIN) / LOSS ANALYSIS

1. Actuarial Value of Assets as of October 1, 2020	\$205,854,724
2. Interest on item $[1. \times 7.5\%]$	\$15,439,104
3. Contributions for the 2020/2021 Plan Year	\$15,381,890
4. Interest on item $[3. \times 7.5\% \times .5]$	\$576,821
5. Benefit Payments for 2020/2021 Plan Year (Including Expenses)	(\$14,424,973)
6. Interest on item $[5. \times 7.5\% \times .5]$	(\$540,936)
7. Expected Actuarial Value of Assets as of October 1, 2021	\$222,286,629
8. Actuarial Value of Assets as of October 1, 2021	\$228,693,196
9. (Gain) / Loss	(\$6,406,567)



GAIN AND LOSS ANALYSIS

TABLE II

C. UNFUNDED ACCRUED ACTUARIAL LIABILITY CONTRIBUTION CHANGE

1. Unfunded Accrued Liability Contribution as of October 1, 2020:		\$6,316,812
2. Net Actuarial (Gains)/Losses During the 2020/2021 Plan Year:		
a. Due to Salary	\$212,012	
b. Due to Investment Performance	(\$504,606)	
c. Due to Turnover/Mortality	(\$107,642)	
d. Due to New Retirements	\$94,429	
e. Due to Difference and Timing in Contributions	(\$48,608)	
f. Due to Data/Service Adjustments/Benefit Payments	(\$123,835)	
g. Due to New Members	\$27,769	
h. Total		(\$450,481)
3. Change in Unfunded Accrued Liability Contribution During the 2020/2021 Plan Year:		
a. Assumption changes	\$353,970	
b. Method changes	\$0	
c. Plan changes	\$3,474,235	
d. Total change		\$3,828,205
4. Other Effects		\$124,018
5. Unfunded Accrued Liability Contribution as of October 1, 2021		\$9,818,554
6. Comments on Change in Unfunded Accrued Liability Contribution:		

Salary/Service: Actual average salary increase of 7.8% compared to expected increases of 5.9%.

Investment Performance: 10.60% actual vs. 7.50% expected return on the actuarial value of assets.

Turnover: Net effect on the valuation liabilities of actual deaths, terminations of employment and disabilities different from what was anticipated in the aggregate by the assumptions related to those events.

New retirements: Net effect of differences in expected vs. actual numbers of, and benefits for, new retirements and refund of employee contributions.

Due to Differences and Timing of Contributions: Due to the one year lag of when the required contribution is determined and when it is deposited into the fund.

Data/Service Adjustments: Effect of service adjustments for service purchases.

Assumption Changes: Assumed investment return reduced from 7.50% to 7.35%.

Method Changes: None.

Plan Changes: Ordinance Nos. 2021-31, 2022-09, 2022-10, & 2022-12

Other Effects: Assumed growth in the unfunded actuarial accrued liability contribution.



ADDITIONAL DISCLOSURES

TABLE III

Schedule of Funding Progress

(\$'s in thousands)

Actuarial Valuation Date	Actuarial Value of Assets (1)	Actuarial Accrued Liability (AAL) (2)	Unfunded AAL (UAAL) (2) - (1)	Funded Ratio (1)/(2)	Covered Payroll (3)	UAAL as % of Covered Payroll [(2) - (1)]/(3)
10/1/2013	\$132,248	\$191,554	\$59,306	69.0%	\$25,923	228.8%
10/1/2014	\$144,640	\$200,747	\$56,107	72.1%	\$26,048	215.4%
10/1/2015	\$153,292	\$209,453	\$56,162	73.2%	\$27,016	207.9%
10/1/2016	\$163,312	\$231,707	\$68,395	70.5%	\$27,957	244.6%
10/1/2017	\$173,854	\$249,422	\$75,568	69.7%	\$29,507	256.1%
10/1/2018	\$185,134	\$268,366	\$83,232	69.0%	\$31,178	267.0%
10/1/2019	\$193,360	\$279,091	\$85,731	69.3%	\$34,586	247.9%
10/1/2020	\$205,855	\$287,809	\$81,954	71.5%	\$35,912	228.2%
10/1/2021	\$228,693	\$338,391	\$109,698	67.6%	\$40,866	268.4%

Additional Information

Valuation date :	October 1, 2020	October 1, 2021
Actuarial cost method:	Entry Age Normal	Entry Age Normal
Amortization method:	Bases prior to 2017 Level Percent Closed	Bases prior to 2017 Level Percent Closed
	Bases on or after 2017 Level Dollar Closed	Bases on or after 2017 Level Dollar Closed
Remaining amortization period:	1 to 30 years	1 to 30 years
Asset valuation method:	5 - Year Smoothed Market	5 - Year Smoothed Market
Actuarial assumptions:		
Investment rate of return	7.50%	7.35%
Projected salary increases	4.25 to 7.50%	4.25 to 7.50%
Includes inflation at	2.50%	2.50%
Cost of living adjustments	2.00%	2.00%

**PRESENT VALUE OF ACCRUED BENEFITS****TABLE IV**

Shown below is the development of the Total Present Value of Accrued Benefit for the Plan. The calculations were performed using the Plan's discount rate of 7.35%.

1. Actuarial Present Value of Accrued Benefits

	As of October 1, 2020	As of October 1, 2021
a. Vested Accrued Benefits:		
i. Inactive members and beneficiaries	\$178,253,140	\$192,305,083
ii. Active members	\$76,677,694	\$102,232,427
iii. Sub-total	\$254,930,834	\$294,537,510
b. Non-vested Accrued Benefits	\$1,820,492	\$2,585,140
c. Total Benefits	\$256,751,326	\$297,122,650
d. Market Value of Assets	\$200,716,424	\$251,492,300
e. Percentage Funded	78.2%	84.6%

2. Statement of Changes in Total Actuarial Present Value of All Accrued Benefits

a. Actuarial Present Value as of October 1, 2020:	\$256,751,326
b. Increase (Decrease) During 2020/2021 Plan Year Attributable to:	
i. Interest	\$18,739,942
ii. Benefits accumulated/experience	\$9,010,459
iii. Benefits paid	(\$13,770,859)
iv. Plan amendments	\$21,590,866
v. Changes in actuarial assumptions or methods	\$4,800,916
vi. Net increase (decrease)	\$40,371,324
c. Actuarial Present Value as of October 1, 2021:	\$297,122,650

3. Items Affecting Calculation of Actuarial Present Value of Accrued Benefits

- a. Plan provisions reflected in the accrued benefits (see Table XIII)
- b. Plan amendments reflected in item 2.b.iv. above
- c. Actuarial assumptions and methods used to determine present values (see Table XII)
- d. Changes in actuarial assumptions and methods reflected in item 2.b.v. above

**INFORMATION REQUIRED BY FLORIDA STATUTE (CHAP. 112)****TABLE V**

	Actuarial valuation prepared as of:		
		Prior to Plan & Assumption Changes	After Plan & Assumption Changes
	October 1, 2020	October 1, 2021	October 1, 2021
1. Participant Data:			
a. Active members:			
i. Number	520	541	541
ii. Total annual payroll	\$35,911,537	\$40,865,981	\$40,865,981
iii. Projected annual payroll	\$36,773,414	\$41,846,765	\$41,846,765
b. Retirees and beneficiaries:			
i. Number	397	392	392
ii. Total annualized benefit	\$12,903,781	\$13,150,853	\$13,150,853
c. Disabled members receiving benefits:			
i. Number	14	11	11
ii. Total annualized benefit	\$372,207	\$270,862	\$270,862
d. Members in DROP:			
i. Number	44	51	51
ii. Total annualized benefit	\$1,810,794	\$2,195,735	\$2,195,735
e. Terminated vested members:			
i. Number	26	29	29
ii. Total annualized benefit	\$461,218	\$418,827	\$418,827
2. Assets:			
a. Actuarial value of assets	\$205,854,724	\$228,693,196	\$228,693,196
b. Market value of assets	\$200,716,424	\$251,492,300	\$251,492,300
3. Liabilities:			
a. Present value of all future expected benefit payments:			
i. Active members:			
Retirement benefits	\$147,857,728	\$159,307,669	\$199,493,339
Vesting benefits	\$3,829,830	\$4,061,736	\$5,483,656
Disability benefits	\$4,505,600	\$4,820,626	\$5,909,756
Death benefits	\$1,653,952	\$1,760,059	\$2,099,190
Return of member contributions	\$756,204	\$901,317	\$907,134
Sub-total	\$158,603,314	\$170,851,407	\$213,893,075
ii. Terminated vested members	\$4,066,043	\$4,442,295	\$4,557,721
iii. Retired members and beneficiaries:			
Retirees, members in DROP, and beneficiaries	\$170,360,918	\$180,030,360	\$185,251,617
Disabled members	\$3,826,179	\$2,466,101	\$2,495,744
Sub-total	\$174,187,097	\$182,496,461	\$187,747,361
iv. Total present value of all future expected ben. pmts.	\$336,856,454	\$357,790,163	\$406,198,157



INFORMATION REQUIRED BY FLORIDA STATUTE (CHAP. 112)

TABLE V

	Actuarial valuation prepared as of:		
		Prior to Plan & Assumption Changes	After Plan & Assumption Changes
	October 1, 2020	October 1, 2021	October 1, 2021
b. Liabilities due and unpaid	\$0	\$0	\$0
c. Active actuarial accrued liability	\$109,555,523	\$117,351,237	\$146,086,058
d. Inactive actuarial accrued liability	\$178,253,140	\$186,938,757	\$192,305,082
e. Total actuarial accrued liability	\$287,808,663	\$304,289,994	\$338,391,140
f. Unfunded actuarial accrued liability (please reference Table Va for details concerning the unfunded liability bases and amortization periods)	\$81,953,939	\$75,596,798	\$109,697,944
4. Actuarial Present Value of Accrued Benefits: (please reference Table IV for details concerning the present value of accrued benefits)	\$256,751,326	\$270,730,868	\$297,122,650
5. Pension Cost (as a % of annual payroll):			
a. Normal cost plus projected administrative expenses	19.56%	19.54%	24.18%
Dollar amount	\$7,192,125	\$8,175,859	\$10,119,283
b. Payment to amortize unfunded liability	17.18%	14.26%	23.46%
Dollar amount	\$6,316,812	\$5,968,055	\$9,818,554
c. Interest adjustment	3.83%	3.53%	4.88%
Dollar amount	\$1,409,355	\$1,475,600	\$2,038,005
d. Amount to be contributed by members	10.00%	10.00%	10.00%
Dollar amount	\$3,677,341	\$4,184,677	\$4,184,677
e. City Minimum Contribution	30.57%	27.33%	42.52%
Dollar amount	\$11,240,951	\$11,434,837	\$17,791,165



INFORMATION REQUIRED BY FLORIDA STATUTE (CHAP. 112)

TABLE V

	Fiscal Year 2019/2020	Fiscal Year 2020/2021	Fiscal Year 2020/2021
6. Past Contributions:			
a. Required City & County contribution	\$10,130,579	\$10,864,448	\$10,864,448
b. Actual contribution made by:			
i. City	\$9,910,087	\$10,669,376	\$10,669,376
ii. County	\$220,492	\$195,072	\$195,072
iii. Members	\$3,104,113	\$4,517,442	\$4,517,442
	Actuarial valuation prepared as of:		
		Prior to Plan & Assumption Changes	After Plan & Assumption Changes
	October 1, 2020	October 1, 2021	October 1, 2021
7. Net actuarial (gain) / loss:	(3,283,755)	(5,010,214)	(5,010,214)
8. Other disclosures:			
a. Present value of active members':			
i. Future salaries:			
at attained age	\$242,753,006	\$260,380,445	\$262,681,615
at entry age	N/A	N/A	N/A
ii. Future contributions:			
at attained age	\$24,275,301	\$26,038,045	\$26,268,162
at entry age	N/A	N/A	N/A
b. Present value of future normal contributions from City	\$24,772,490	\$27,462,125	\$41,538,856
c. Present value of future expected benefit payments for active members at entry age	N/A	N/A	N/A
d. Amount of active members' accumulated contributions	\$30,946,237	\$32,844,477	\$32,844,477



UNFUNDED LIABILITY BASES

TABLE Va

Description		Original Amount	Outstanding Balance as of October 1, 2020	BOY 2020/2021 Amortization Payment	Outstanding Balance as of October 1, 2021	BOY 2021/2022 Amortization Payment	Years Remaining October 1, 2021
1991	Experience (Gain)/Loss	\$180,600	\$22,792	\$22,792	\$0	\$0	0 years
1992	Experience (Gain)/Loss	(\$248,979)	(\$61,252)	(\$31,370)	(\$32,123)	(\$32,123)	1 years
1993	Experience (Gain)/Loss	(\$304,735)	(\$109,780)	(\$38,386)	(\$76,749)	(\$39,280)	2 years
1994	Experience (Gain)/Loss	\$290,132	\$139,018	\$37,328	\$109,317	\$38,172	3 years
1995	Experience (Gain)/Loss	(\$1,175,801)	(\$668,974)	(\$147,106)	(\$561,008)	(\$150,334)	4 years
1996	Experience (Gain)/Loss	(\$1,384,333)	(\$934,516)	(\$175,272)	(\$816,187)	(\$179,001)	5 years
1997	Experience (Gain)/Loss	(\$4,825,881)	(\$4,052,629)	(\$666,675)	(\$3,639,901)	(\$680,429)	6 years
1998	Experience (Gain)/Loss	(\$3,450,637)	(\$2,901,628)	(\$427,309)	(\$2,659,893)	(\$435,851)	7 years
1999	Experience (Gain)/Loss	(\$4,863,161)	(\$4,177,286)	(\$559,334)	(\$3,889,298)	(\$570,166)	8 years
2000	Experience (Gain)/Loss	(\$1,480,206)	(\$1,297,432)	(\$159,900)	(\$1,222,847)	(\$162,898)	9 years
2001	Experience (Gain)/Loss	\$7,815,513	\$7,157,976	\$820,016	\$6,813,307	\$834,896	10 years
2002	Experience (Gain)/Loss	\$9,987,004	\$9,480,649	\$1,017,789	\$9,097,575	\$1,035,655	11 years
2003	Experience (Gain)/Loss	\$4,483,179	\$4,377,521	\$443,382	\$4,229,199	\$450,907	12 years
2004	Experience (Gain)/Loss	\$4,956,483	\$4,959,939	\$476,705	\$4,819,477	\$484,524	13 years
2005	Experience (Gain)/Loss	\$6,499,426	\$6,632,886	\$607,907	\$6,476,852	\$617,539	14 years
2006	Experience (Gain)/Loss	(\$3,577,856)	(\$3,697,460)	(\$324,527)	(\$3,625,903)	(\$329,491)	15 years
2007	Experience (Gain)/Loss	\$343,924	\$358,071	\$30,210	\$352,451	\$30,656	16 years
2008	Experience (Gain)/Loss	\$2,246,447	\$2,346,930	\$190,954	\$2,317,674	\$193,672	17 years
2009	Experience (Gain)/Loss	\$14,709,552	\$15,375,245	\$1,209,940	\$15,227,703	\$1,226,540	18 years
2010	Experience (Gain)/Loss	\$1,517,167	\$1,582,477	\$120,758	\$1,571,348	\$122,353	19 years
2011	Experience (Gain)/Loss	\$10,387,585	\$10,823,858	\$802,786	\$10,772,652	\$812,999	20 years
2012	Experience (Gain)/Loss	\$6,483,132	\$6,763,637	\$488,588	\$6,745,678	\$494,569	21 years
2013	Experience (Gain)/Loss	(\$3,009,142)	(\$3,137,353)	(\$221,151)	(\$3,134,917)	(\$223,753)	22 years
2014	Experience (Gain)/Loss	(\$3,745,256)	(\$3,895,836)	(\$268,430)	(\$3,899,461)	(\$271,464)	23 years
2015	Experience (Gain)/Loss	(\$407,300)	(\$422,058)	(\$28,470)	(\$423,107)	(\$28,779)	24 years
2016	Experience (Gain)/Loss	(\$3,814,042)	(\$3,931,694)	(\$260,006)	(\$3,947,065)	(\$262,713)	25 years
2017	Experience (Gain)/Loss	\$4,344,887	\$4,213,585	\$342,582	\$4,161,328	\$338,452	26 years
2018	Experience (Gain)/Loss	\$851,524	\$834,732	\$67,093	\$825,212	\$66,264	27 years
2019	Experience (Gain)/Loss	(\$259,231)	(\$256,747)	(\$20,420)	(\$254,052)	(\$20,162)	28 years
2020	Experience (Gain)/Loss	(\$3,431,880)	(\$3,431,880)	(\$270,308)	(\$3,398,690)	(\$266,816)	29 years
2021	Experience (Gain)/Loss	(\$5,713,114)			(\$5,713,114)	(\$444,053)	30 years



UNFUNDED LIABILITY BASES

TABLE Va

Description		Original Amount	Outstanding Balance as of October 1, 2020	2020/2021 Amortization Payment	Outstanding Balance as of October 1, 2021	2021/2022 Amortization Payment	Years Remaining October 1, 2021
1992	Plan Amendment Tax Compliance/Pick-Up Plan	(\$132,092)	(\$32,495)	(\$16,642)	(\$17,042)	(\$17,042)	1 years
1994	Plan Amendment Change Pre-Retirement Death Benefits	\$91,138	\$43,670	\$11,726	\$34,340	\$11,991	3 years
2000	Plan Amendment COLA	\$13,628,631	\$11,898,223	\$1,466,381	\$11,214,230	\$1,493,874	9 years
2004	Plan Amendment DROP	\$2,820,380	\$2,822,346	\$271,259	\$2,742,419	\$275,708	13 years
2004	Plan Amendment Elected Officials/Appointees	\$1,220,245	\$1,221,097	\$117,361	\$1,186,516	\$119,286	13 years
2006	Plan Amendment 2.75% Multiplier	\$6,510,457	\$6,728,094	\$590,527	\$6,597,885	\$599,560	15 years
2008	Plan Amendment Senior Managers	\$383,377	\$400,523	\$32,588	\$395,530	\$33,052	17 years
2009	Plan Amendment Senior Managers	\$134,409	\$139,444	\$10,973	\$138,106	\$11,124	18 years
2015	Plan Amendment 7 Year Vesting	\$50,515	\$52,346	\$3,531	\$52,476	\$3,569	24 years
2020	Plan Amendment Ord. No. 2021-31	\$3,987,394	\$3,987,394	\$314,063	\$3,948,831	\$310,005	29 years
2021	Plan Amedment Ord. No. 2021-31 (Tier 1 Svc. Purchase)	\$2,543,676			\$2,543,676	\$199,692	29 years
2021	Plan Amendment Ord. Nos. 2021-31; 2022-09, 10, & 12	\$25,906,035			\$25,906,035	\$3,274,543	11 years
1992	Assumption Change	(\$806,413)	(\$198,386)	(\$101,603)	(\$104,042)	(\$104,042)	1 years
1994	Assumption Change	\$1,260,489	\$603,950	\$162,167	\$474,917	\$165,835	3 years
1995	Assumption Change	\$697,180	\$396,658	\$87,224	\$332,642	\$89,139	4 years
1996	Assumption Change	\$365,331	\$246,620	\$46,254	\$215,393	\$47,239	5 years
1997	Assumption Change	\$73,638	\$61,840	\$10,173	\$55,542	\$10,383	6 years
2000	Assumption Change	(\$10,001,095)	(\$8,731,269)	(\$1,076,074)	(\$8,229,335)	(\$1,096,249)	9 years
2002	Assumption Change	\$1,136,132	\$1,078,525	\$115,784	\$1,034,947	\$117,817	11 years
2008	Assumption Change	(\$117,474)	(\$122,731)	(\$9,986)	(\$121,201)	(\$10,128)	17 years
2016	Assumption Change (Florida Statute 112.63(1)(f))	\$15,767,946	\$16,254,339	\$1,074,910	\$16,317,886	\$1,086,103	25 years
2017	Assumption Change (7.90%)	\$2,649,056	\$2,569,002	\$208,871	\$2,537,141	\$206,353	26 years
2018	Assumption Change (7.65%)	\$7,032,129	\$6,893,456	\$554,075	\$6,814,835	\$547,229	27 years
2019	Assumption Change (7.55%)	\$2,995,400	\$2,966,693	\$235,950	\$2,935,549	\$232,967	28 years
2020	Assumption Change (7.50%)	(\$3,875,910)	(\$3,875,910)	(\$305,282)	(\$3,838,425)	(\$301,337)	29 years
2021	Assumption Change (7.35%)	\$5,651,435			\$5,651,435	\$439,259	30 years



UNFUNDED LIABILITY BASES

TABLE Va

<u>Description</u>	<u>Original Amount</u>	<u>Outstanding Balance as of October 1, 2020</u>	<u>BOY 2020/2021 Amortization Payment</u>	<u>Outstanding Balance as of October 1, 2021</u>	<u>BOY 2021/2022 Amortization Payment</u>	<u>Years Remaining October 1, 2021</u>
2002 Method Change	(\$5,539,505)	(\$5,258,641)	(\$564,538)	(\$5,046,161)	(\$574,448)	11 years
2010 Method Change	(\$696,223)	(\$726,192)	(\$55,415)	(\$721,085)	(\$56,147)	19 years
2000 Variable Benefit	\$226,471	\$192,427	\$23,715	\$181,365	\$24,160	9 years
2001 Variable Benefit	\$280,869	\$250,125	\$28,654	\$238,081	\$29,174	10 years
Total		\$81,953,939	\$6,316,812	\$109,697,944	\$9,818,554	

<u>Date</u>	<u>Projected Unfunded Liability</u>
October 1, 2021	\$109,697,944
October 1, 2022	\$107,220,524
October 1, 2023	\$104,257,700
October 1, 2024	\$100,890,707
October 1, 2051	\$0

* The total experience loss/(gain) for the 2020/2021 plan year of (\$5,010,214) is adjusted by contribution timing differences adjusted with interest equal to (\$702,900).

**DEVELOPMENT OF MARKET ASSET (GAIN)/LOSS****TABLE VIa**

	As of October 1, 2020	As of October 1, 2021
1. Market Value of Assets		
a. Cash and cash equivalents (2.44%)	\$7,776,521	\$6,148,199
b. U.S. government bonds (5.58%)	\$11,767,430	\$14,040,925
c. Equity securities (65.02%)	\$123,798,859	\$163,509,885
d. Corporate bonds and notes (5.08%)	\$14,745,480	\$12,777,217
e. Private equity funds (5.68%)	\$12,881,548	\$14,284,528
f. Real estate (13.39%)	\$29,706,710	\$33,685,865
g. Net receivables and other (0.08%)	\$186,172	\$200,112
h. Accrued expenses payable (-0.07%)	(\$146,296)	(\$165,087)
i. Hedge fund (2.79%)	\$0	\$7,010,656
j. Market value of assets (100%)	\$200,716,424	\$251,492,300
2. Actuarial Value of Assets		
a. Market Value of Assets	\$200,716,424	\$251,492,300
b. 5-year phase-in of gains/(losses) on Actuarial Value of Assets:		
i. 2016/2017	\$8,461,700	$\times 20\% =$ \$1,692,340
ii. 2017/2018	\$3,150,542	$\times 40\% =$ \$1,260,217
iii. 2018/2019	(\$9,073,291)	$\times 60\% =$ (\$5,443,975)
iv. 2019/2020	(\$3,308,603)	$\times 80\% =$ (\$2,646,882)
v. 2020/2021	\$34,729,343	$\times 80\% =$ \$27,783,474
vi. Total unrecognized gains/(losses)	(\$5,138,300)	\$22,799,104
c. Preliminary Actuarial Value of Assets (Item a. minus item b.vi.)	\$205,854,724	\$228,693,196
d. Corridor around Actuarial Value of Assets		
i. 80% of Market Value (item a.)	\$160,573,139	\$201,193,840
ii. 120% of Market Value (item a.)	\$240,859,709	\$301,790,760
e. Actuarial Value of Assets (Item c., but within items d.i. and d.ii.)	\$205,854,724	\$228,693,196

**DEVELOPMENT OF MARKET ASSET (GAIN)/LOSS****TABLE VIa**

	As of October 1, 2020	As of October 1, 2021
1. Beginning of Year Market Value	\$191,862,824	\$200,716,424
2. Expected Interest on Assets	\$14,485,643	\$15,053,732
3. Contributions	\$13,234,692	\$15,381,890
4. Benefit Payments	(\$14,901,569)	(\$13,770,859)
5. Administrative Expenses	(\$572,044)	(\$654,114)
6. Interest on 3, 4, and 5	<u>(\$84,519)</u>	<u>\$35,884</u>
7. Expected End of Year Market Value	\$204,025,027	\$216,762,957
8. Actual End of Year Market Value	\$200,716,424	\$251,492,300
9. Gain/(Loss) for Plan Year	(\$3,308,603)	\$34,729,343

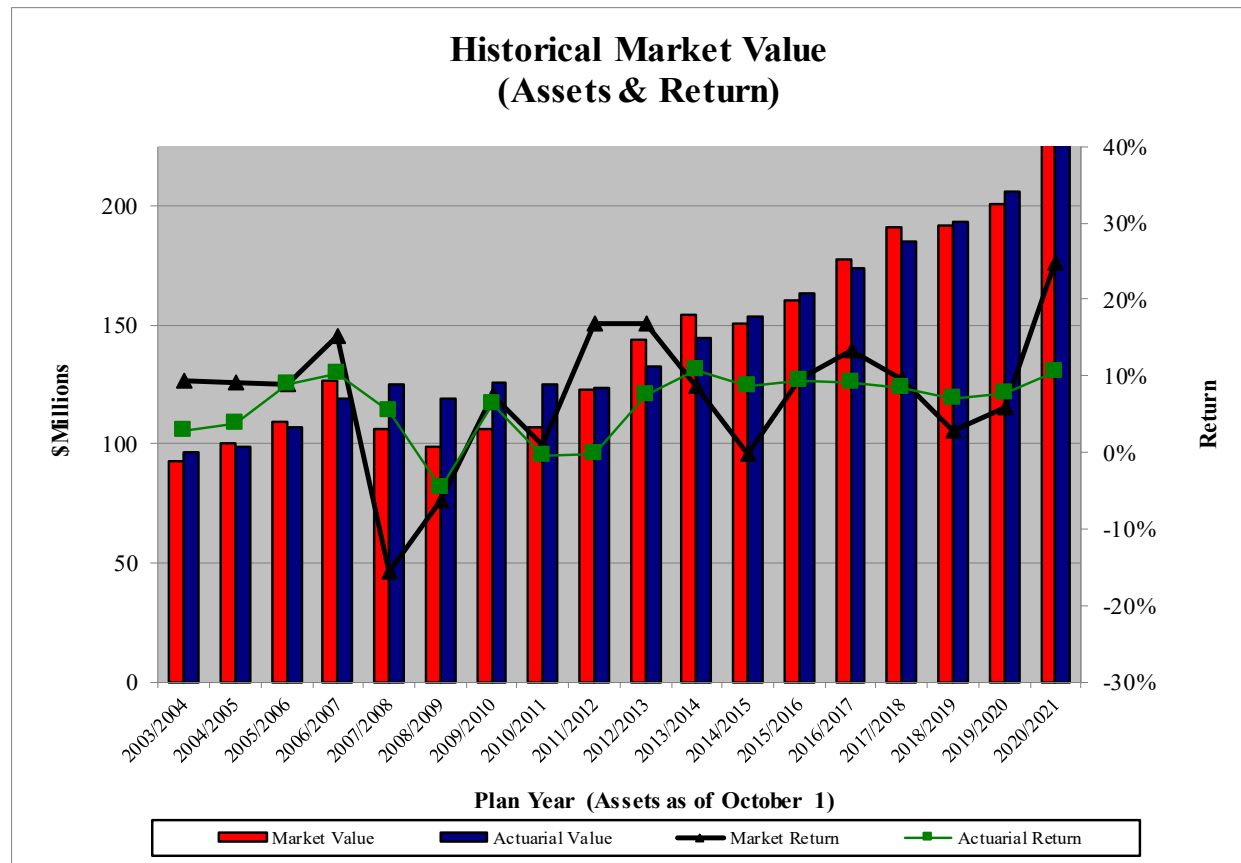
**MARKET ASSET RECONCILIATION****TABLE VIb**

	As of October 1, 2020	As of October 1, 2021
1. Beginning of Year Market Value:	\$191,862,824	\$200,716,424
2. Increases Due to:		
a. Contributions:		
i. City	\$9,910,087	\$10,669,376
ii. County	\$220,492	\$195,072
iii. Employee	\$3,104,113	\$4,517,442
iv. Total	<u>\$13,234,692</u>	<u>\$15,381,890</u>
b. Investment income	\$11,092,521	\$49,818,959
c. Total increases	<u><u>\$24,327,213</u></u>	<u><u>\$65,200,849</u></u>
3. Decreases Due to:		
a. Benefit payments	\$14,559,767	\$13,457,378
b. Refund of member contributions	\$341,802	\$313,481
c. Administrative expenses	\$572,044	\$654,114
d. Miscellaneous	\$0	\$0
e. Total decreases	<u><u>\$15,473,613</u></u>	<u><u>\$14,424,973</u></u>
4. End of Year Market Value:	\$200,716,424	\$251,492,300



HISTORICAL ASSET INFORMATION

TABLE VII



Plan Year	Market Value as of October 1	Actuarial Value as of October 1	Benefit Payments	Administrative Expenses	City, County, and Member Contributions	Market Return	Actuarial Return
2003/2004	\$92,735,898	\$96,735,577	\$3,895,060	\$330,446	\$3,481,462	9.40%	2.90%
2004/2005	\$99,890,915	\$98,980,085	\$4,967,607	\$387,998	\$4,039,559	9.10%	3.70%
2005/2006	\$109,249,514	\$107,334,005	\$4,862,124	\$425,926	\$4,905,164	8.90%	8.80%
2006/2007	\$126,184,449	\$118,772,822	\$5,376,897	\$482,702	\$6,246,138	15.10%	10.30%
2007/2008	\$106,187,212	\$124,869,067	\$6,521,687	\$531,899	\$6,506,416	(15.70)%	5.30%
2008/2009	\$99,128,822	\$118,954,587	\$6,309,625	\$517,272	\$6,584,631	(6.40)%	(4.60)%
2009/2010	\$106,118,339	\$126,102,821	\$7,081,623	\$541,663	\$7,207,441	7.49%	6.37%
2010/2011	\$106,693,934	\$125,170,479	\$7,858,299	\$483,843	\$8,032,038	0.84%	(0.49)%
2011/2012	\$123,122,925	\$123,424,957	\$9,328,455	\$490,142	\$8,374,155	16.87%	(0.24)%
2012/2013	\$143,522,730	\$132,247,827	\$8,781,030	\$479,816	\$8,857,264	16.92%	7.49%
2013/2014	\$154,313,634	\$144,640,159	\$10,409,529	\$491,959	\$9,213,527	8.75%	10.72%
2014/2015	\$150,255,553	\$153,291,563	\$12,524,827	\$530,248	\$9,232,033	(0.15)%	8.74%
2015/2016	\$160,422,298	\$163,311,844	\$12,735,090	\$526,236	\$9,138,762	9.64%	9.35%
2016/2017	\$177,325,805	\$173,854,154	\$13,120,101	\$475,674	\$9,372,720	13.34%	9.16%
2017/2018	\$191,219,657	\$185,134,138	\$13,567,082	\$539,529	\$10,965,265	9.69%	8.37%
2018/2019	\$191,862,824	\$193,359,698	\$16,369,186	\$572,997	\$12,211,294	2.85%	7.09%
2019/2020	\$200,716,424	\$205,854,724	\$14,901,569	\$572,044	\$13,234,692	5.82%	7.66%
2020/2021	\$251,492,300	\$228,693,196	\$13,770,859	\$654,114	\$15,381,890	24.76%	10.60%

**REVENUES BY SOURCE AND EXPENSES BY TYPE****TABLE VIIa**

REVENUES					
Fiscal Year	City and County Contributions	Member Contributions	Sub-Total	Net Investment Income	Total
2004/2005	\$2,341,224	\$1,698,335	\$4,039,559	\$8,471,063	\$12,510,622
2005/2006	\$3,144,061	\$1,761,103	\$4,905,164	\$9,741,485	\$14,646,649
2006/2007	\$4,064,240	\$2,181,898	\$6,246,138	\$16,548,396	\$22,794,534
2007/2008	\$3,416,488	\$3,089,928	\$6,506,416	(\$19,450,067)	(\$12,943,651)
2008/2009	\$3,706,870	\$2,877,761	\$6,584,631	(\$6,816,124)	(\$231,493)
2009/2010	\$4,338,870	\$2,868,571	\$7,207,441	\$7,405,362	\$14,612,803
2010/2011	\$5,351,521	\$2,680,517	\$8,032,038	\$885,699	\$8,917,737
2011/2012	\$5,801,971	\$2,572,184	\$8,374,155	\$17,873,433	\$26,247,588
2012/2013	\$6,332,731	\$2,524,533	\$8,857,264	\$20,803,387	\$29,660,651
2013/2014	\$6,697,862	\$2,515,665	\$9,213,527	\$12,478,865	\$21,692,392
2014/2015	\$6,669,132	\$2,562,901	\$9,232,033	(\$235,039)	\$8,996,994
2015/2016	\$6,545,407	\$2,593,355	\$9,138,762	\$14,289,309	\$23,428,071
2016/2017	\$6,755,068	\$2,617,652	\$9,372,720	\$21,126,562	\$30,499,282
2017/2018	\$8,301,969	\$2,663,296	\$10,965,265	\$17,035,198	\$28,000,463
2018/2019	\$9,330,496	\$2,880,798	\$12,211,294	\$5,374,056	\$17,585,350
2019/2020	\$10,130,579	\$3,104,113	\$13,234,692	\$11,092,521	\$24,327,213
2020/2021	\$10,864,448	\$4,517,442	\$15,381,890	\$49,818,959	\$65,200,849

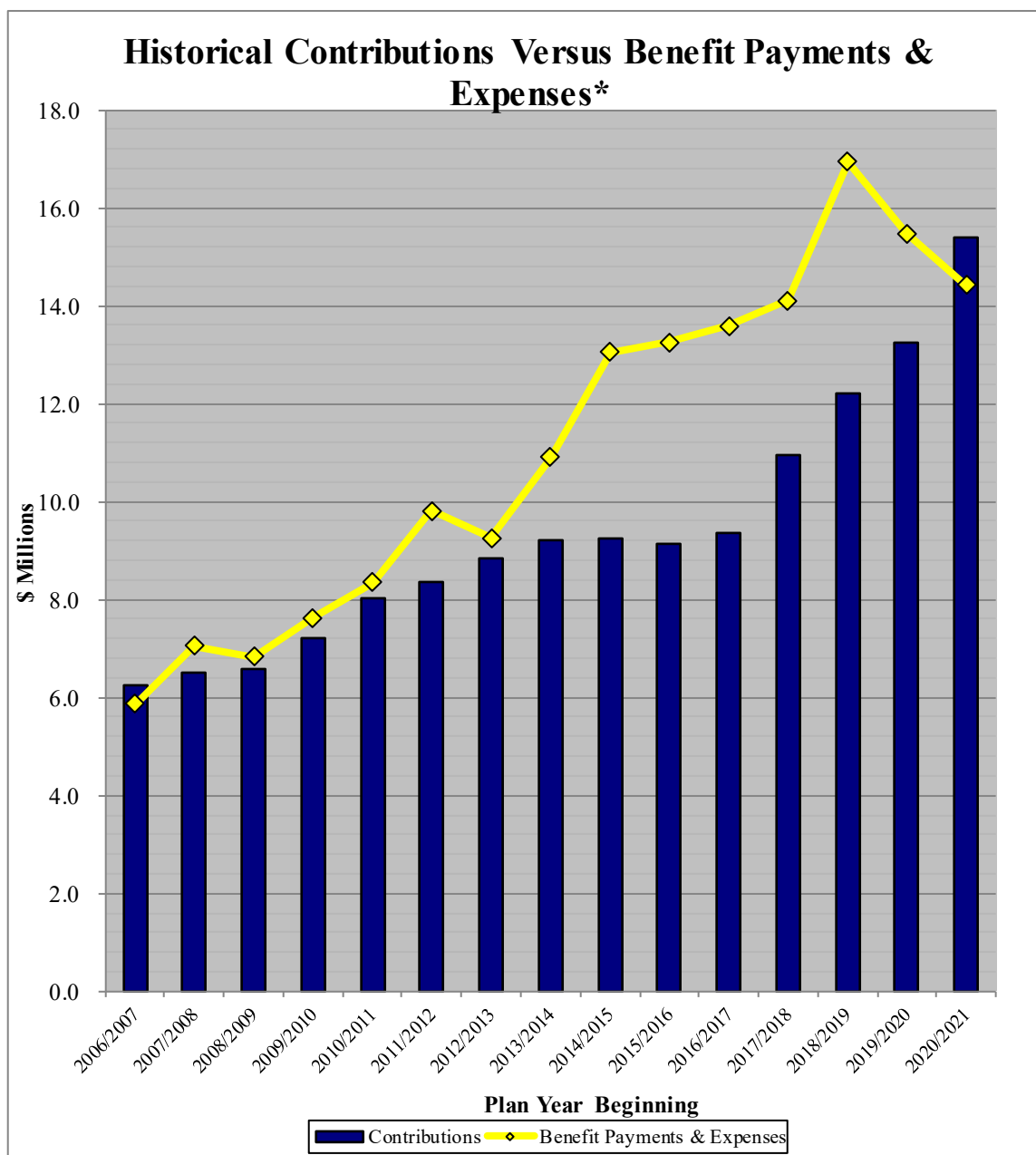
EXPENSES				
Fiscal Year	Benefits Paid	Member Refunds	Administrative Expenses*	Total
2004/2005	\$4,695,826	\$271,781	\$387,998	\$5,355,605
2005/2006	\$4,641,050	\$221,074	\$425,926	\$5,288,050
2006/2007	\$5,009,768	\$367,129	\$482,702	\$5,859,599
2007/2008	\$6,333,970	\$187,717	\$531,899	\$7,053,586
2008/2009	\$6,010,437	\$299,188	\$517,272	\$6,826,897
2009/2010	\$6,991,324	\$90,299	\$541,663	\$7,623,286
2010/2011	\$7,580,413	\$277,886	\$483,843	\$8,342,142
2011/2012	\$9,122,607	\$205,848	\$490,142	\$9,818,597
2012/2013	\$8,621,962	\$159,068	\$479,816	\$9,260,846
2013/2014	\$10,047,279	\$362,250	\$491,959	\$10,901,488
2014/2015	\$12,286,072	\$238,755	\$530,248	\$13,055,075
2015/2016	\$12,536,330	\$198,760	\$526,236	\$13,261,326
2016/2017	\$12,997,314	\$122,787	\$475,674	\$13,595,775
2017/2018	\$13,342,113	\$224,969	\$539,529	\$14,106,611
2018/2019	\$16,084,009	\$285,177	\$572,997	\$16,942,183
2019/2020	\$14,559,767	\$341,802	\$572,044	\$15,473,613
2020/2021	\$13,457,378	\$313,481	\$654,114	\$14,424,973

* Does not include investment expenses



CONTRIBUTIONS VS. FUND PAYOUTS

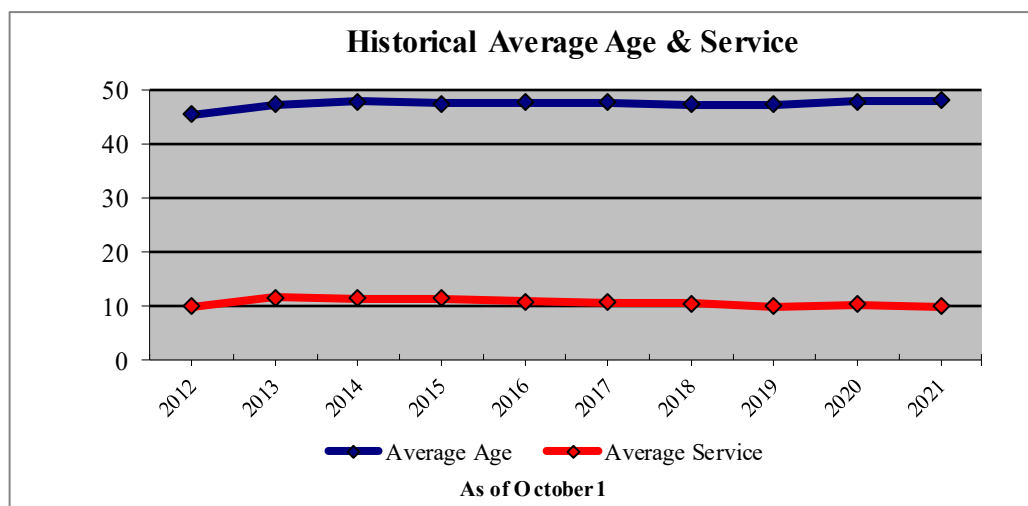
TABLE VIII



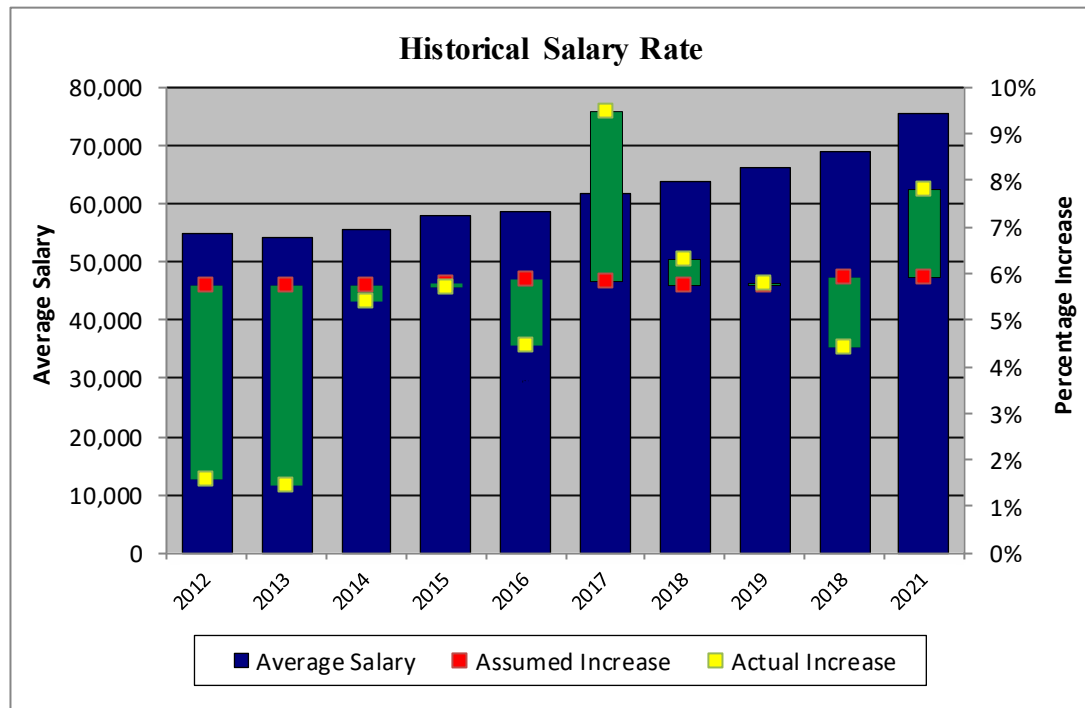
* Please reference Table VIIa for the historical benefit payments, expenses, and contributions.

**SUMMARY OF MEMBER DATA****TABLE IX**

	As of October 1, 2020	As of October 1, 2021
1. Active Members		
a. Vested	274	275
b. Non-vested	246	266
c. Sub-total	520	541
2. Non-active, Non-retired Members		
a. Fully or partially vested	26	29
3. Retired Members		
a. Members in DROP	44	51
b. Retirees	344	340
c. Disabled	14	11
d. Beneficiaries	53	52
e. Sub-total	455	454
4. Total Members	1,001	1,024



Date	Average Service Earned	Average Attained Age
October 1, 2012	10.1	45.3
October 1, 2013	11.7	47.2
October 1, 2014	11.5	47.8
October 1, 2015	11.4	47.4
October 1, 2016	11.0	47.7
October 1, 2017	10.7	47.6
October 1, 2018	10.5	47.3
October 1, 2019	10.1	47.2
October 1, 2020	10.5	47.8
October 1, 2021	10.1	47.9



Date	Average Salary	Actual Salary Increase	Assumed Salary Increase
October 1, 2012	54,732	1.59%	5.75%
October 1, 2013	54,118	1.44%	5.75%
October 1, 2014	55,659	5.38%	5.75%
October 1, 2015	57,849	5.72%	5.78%
October 1, 2016	58,611	4.45%	5.89%
October 1, 2017	61,859	9.47%	5.82%
October 1, 2018	63,890	6.30%	5.75%
October 1, 2019	66,131	5.80%	5.73%
October 1, 2020	69,061	4.40%	5.90%
October 1, 2021	75,538	7.79%	5.93%



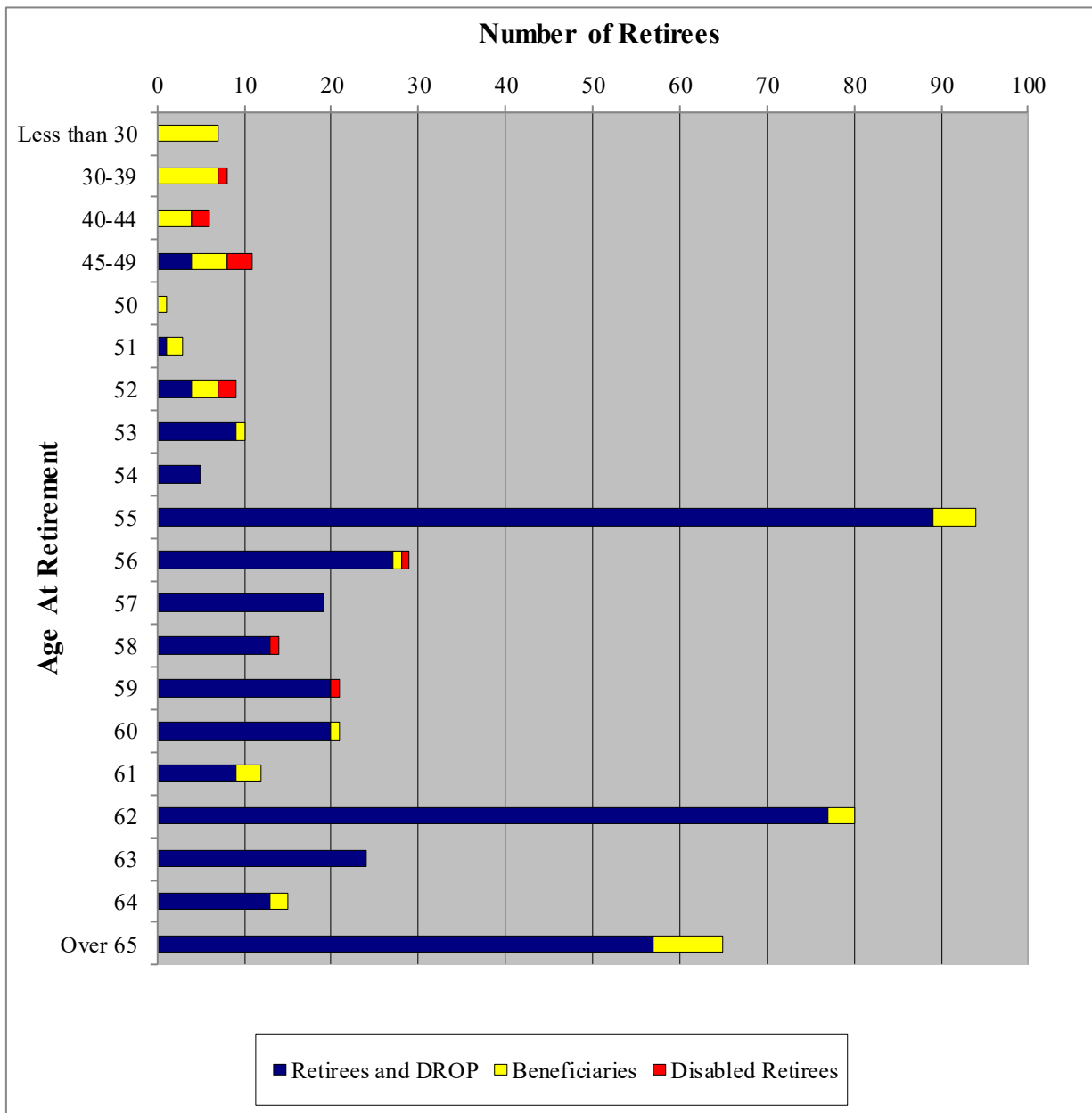
The definition of compensation for benefit determination purposes includes base pay and regular longevity wages, and excludes overtime, bonuses and any other non-regular payments. The table on the below illustrates the ten year pay history for the System. Valuation compensation has increased by 4.53% per year for the ten-year period ending October 1, 2021.

Valution Date	Valuation Payroll	10 Yr Average Annual Increase Ending October 1,
October 1, 2021	\$40,865,981	4.53%
October 1, 2020	35,911,537	3.05%
October 1, 2019	34,586,429	2.33%
October 1, 2018	31,178,459	1.27%
October 1, 2017	29,506,551	1.01%
October 1, 2016	27,957,209	1.14%
October 1, 2015	27,015,682	1.89%
October 1, 2014	26,673,573	2.00%
October 1, 2013	25,992,708	1.38%
October 1, 2012	25,833,472	1.58%
October 1, 2011	26,238,403	2.37%
October 1, 2010	26,596,532	
October 1, 2009	27,477,396	
October 1, 2008	27,477,655	
October 1, 2007	26,692,123	
October 1, 2006	24,962,545	
October 1, 2005	22,405,000	
October 1, 2004	21,875,000	
October 1, 2003	22,655,000	
October 1, 2002	22,075,000	
October 1, 2001	20,759,000	



RETIREE DATA

TABLE IXb



Average benefit being paid to non-disabled retirees is \$3,053.72 per month.

Average benefit being paid to disabled retirees is \$2,051.98 per month.

Average benefit being paid to beneficiaries is \$1,632.27 per month.



DATA RECONCILIATION

TABLE IXc

	<u>Active</u>	<u>Non-Active, Non-Retired</u>	<u>Retired</u>	<u>Total</u>
1. Number of members as of October 1, 2020	520	26	455	1,001
2. Change in Status during the plan year:				
a. Actives who became inactive	(4)	4		
b. Actives who retired	(18)		18	
c. Inactives who became active	1			1
d. Inactives who retired		(1)	1	
e. Retirees who became active				
3. No longer members due to:				
a. Death	(1)		(24)	(25)
b. Permanent break-in-service	(21)			(21)
c. Forfeiture of benefits				
d. Expiration of certain period			(4)	(4)
e. Included in error last year				
4. New members due to:				
a. Initial membership	64			64
b. Death of another member			8	8
c. Omitted in error last year				
d. Correction				
5. Number of members as of October 1, 2021	541	29	454	1,024



AGE-SERVICE SALARY TABLE

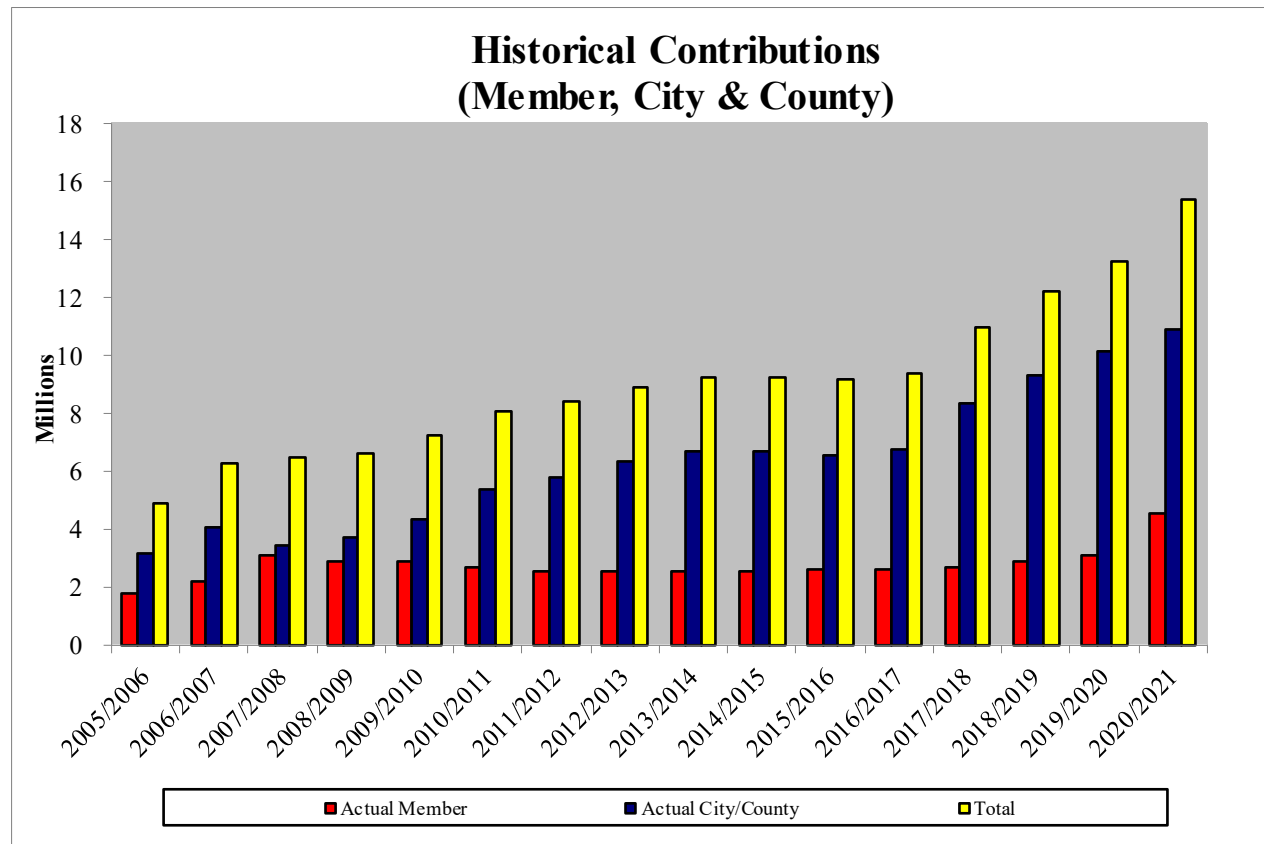
TABLE IXd

Attained Age	<u>Completed Years of Service</u>										Total
	Under 1	1 to 4	5 to 9	10 to 14	15 to 19	20 to 24	25 to 29	30 to 34	35 to 39	40 & Up	
Under 25	2	5	0	0	0	0	0	0	0	0	7
Avg. Pay	42,146	46,206	0	0	0	0	0	0	0	0	45,046
25 to 29	6	19	4	0	0	0	0	0	0	0	29
Avg. Pay	40,378	52,665	55,370	0	0	0	0	0	0	0	50,496
30 to 34	4	29	14	0	0	0	0	0	0	0	47
Avg. Pay	42,793	54,277	64,845	0	0	0	0	0	0	0	56,447
35 to 39	10	24	21	10	8	0	0	0	0	0	73
Avg. Pay	42,242	57,077	64,480	73,182	77,548	0	0	0	0	0	61,624
40 to 44	4	10	10	6	15	8	0	0	0	0	53
Avg. Pay	53,287	52,862	68,806	89,848	70,428	78,165	0	0	0	0	68,880
45 to 49	3	15	14	13	16	16	7	0	0	0	84
Avg. Pay	44,974	67,680	94,748	96,093	87,009	80,937	83,066	0	0	0	83,267
50 to 54	2	19	12	6	12	12	6	9	0	0	78
Avg. Pay	79,331	77,310	71,314	81,097	78,436	96,851	83,914	99,025	0	0	82,924
55 to 59	7	16	15	10	18	4	9	2	2	0	83
Avg. Pay	66,786	89,903	81,814	84,699	81,278	101,213	90,302	102,498	89,612	0	84,879
60 to 64	1	15	16	6	12	6	1	3	2	0	62
Avg. Pay	92,236	76,772	80,451	93,077	89,528	119,171	105,894	97,098	157,183	0	90,168
65 to 79	1	4	5	2	1	1	0	1	0	0	15
Avg. Pay	77,250	55,357	88,967	96,247	102,007	136,230	0	63,137	0	0	82,492
70 & Up	1	3	3	0	2	1	0	0	0	0	10
Avg. Pay	80,190	67,006	156,315	0	68,794	61,165	0	0	0	0	94,891
Total	41	159	114	53	84	48	23	15	4	0	541
Avg. Pay	52,294	64,155	77,034	86,880	80,799	91,662	87,111	96,710	123,397	0	75,538



HISTORICAL CONTRIBUTIONS

TABLE X



Plan Year	Actual Member	City/County	Total
2005/2006	\$1,761,103	\$3,144,061	\$4,905,164
2006/2007	\$2,181,898	\$4,064,240	\$6,246,138
2007/2008	\$3,089,928	\$3,416,488	\$6,506,416
2008/2009	\$2,877,761	\$3,706,870	\$6,584,631
2009/2010	\$2,868,571	\$4,338,870	\$7,207,441
2010/2011	\$2,680,517	\$5,351,521	\$8,032,038
2011/2012	\$2,572,184	\$5,801,971	\$8,374,155
2012/2013	\$2,524,533	\$6,332,731	\$8,857,264
2013/2014	\$2,515,665	\$6,697,862	\$9,213,527
2014/2015	\$2,562,901	\$6,669,132	\$9,232,033
2015/2016	\$2,593,355	\$6,545,407	\$9,138,762
2016/2017	\$2,617,652	\$6,755,068	\$9,372,720
2017/2018	\$2,663,296	\$8,301,969	\$10,965,265
2018/2019	\$2,880,798	\$9,330,496	\$12,211,294
2019/2020	\$3,104,113	\$10,130,579	\$13,234,692
2020/2021	\$4,517,442	\$10,864,448	\$15,381,890



Actuarial Standards of Practice are issued by the Actuarial Standards Board and are binding on credentialed actuaries practicing in the United States. These standards generally identify what the actuary should consider, document and disclose when performing an actuarial assignment. In September 2017, Actuarial Standard of Practice Number 51, Assessment and Disclosure of Risk in Measuring Pension Obligations, (ASOP 51) was issued as final with application to measurement dates on or after November 1, 2018. This ASOP, which applies to funding valuations, actuarial projections, and actuarial cost studies of proposed plan changes, is first applicable for the October 1, 2019 actuarial valuation for the Plan.

A typical retirement plan faces many different risks, but the greatest risk is the inability to make benefit payments when due. If plan assets are depleted, benefits may not be paid which could create legal and litigation risk or the plan could become “pay as you go.” The term “risk” is most commonly associated with an outcome with undesirable results. However, in the actuarial world, risk can be translated as uncertainty. The actuarial valuation process uses many actuarial assumptions to project how future contributions and investment returns will meet the cash flow needs for future benefit payments. Of course, we know that actual experience will not unfold exactly as anticipated by the assumptions and that uncertainty, whether favorable or unfavorable, creates risk. ASOP 51 defines risk as the potential of actual future measurements to deviate from expected results due to actual experience that is different than the actuarial assumptions.

The various risk factors for a given plan can have a significant impact – positive or negative – on the actuarial projection of liability and contribution rates.

There are a number of risks inherent in the funding of a defined benefit plan. These include:

- economic risks, such as investment return and price inflation;
- demographic risks such as mortality, payroll growth, aging population including impact of baby boomers, and retirement ages;
- contribution risk, i.e., the potential for contribution rates to be too high for the plan sponsor/employer to pay and
- external risks such as the regulatory and political environment.

There is a direct correlation between healthy, well-funded retirement plans and consistent contributions equal to the full actuarial contribution rate each year. The Plan is primarily funded by member and employer contributions to the trust fund, together with the earnings on these accumulated contributions. These contributions fund benefit accruals for current active members and administrative expenses. The remainder of the contributions amortizes the unfunded actuarial accrued liability. The required contribution rate is the sum of the rates for the normal cost for the plan and the amortization of the unfunded actuarial accrued liability. The required contribution rate is sensitive to increases in the UAAL and periods of lower than expected returns would lead to much higher contribution rates as a percentage of payroll.



The other significant risk factor for the Plan is investment return because of the volatility of returns and the size of plan assets compared to payroll. A perusal of historical returns over 10-20 years reveals that the actual return each year is rarely close to the average return for the same period. This is to be expected, given the underlying capital market assumptions and the Plan's asset allocation. To the extent market rates of interest affect the expected return on assets, there is a risk of change to the discount rate which determines the present value of liabilities and actuarial valuation results.

A key demographic risk for the Plan is improvements in mortality (longevity) greater than anticipated. While the actuarial assumptions reflect a margin for improvement in mortality experience and these assumptions are refined every experience study, the risk arises because there is a possibility of some sudden shift, perhaps from a significant medical breakthrough that could quickly increase liabilities. Likewise, as we have recently seen with COVID-19, a public health crisis can result in a significant number of additional deaths in a short period of time, which can influence plan liabilities and future funding needs. While either of these events could happen, it represents a small probability and thus represents much less risk than the volatility associated with investment returns.

**1. Actuarial Cost Method**

- Entry Age Normal Cost Method. Total normal cost is determined as a level percentage of pay which would be required annually from entry age to retirement age to fund the expected retirement benefits assuming the Plan had always been in effect. The Actuarial Accrued Liability is the amount of the Present Value of Benefits that have been accrued under the Entry Age Normal Method to date.

2. Decrements

- **Pre-Retirement Mortality**

Female: PUB-2010 Headcount Weighted General Below Median Employee Female Table

Male: PUB-2010 Headcount Weighted General Below Median Employee Male Table, set back 1 year

Projection Scale: MP-2018

- **Post-Retirement Healthy Mortality**

Female: PUB-2010 Headcount Weighted General Below Median Healthy Retiree Female Table

Male: PUB-2010 Headcount Weighted General Below Median Healthy Retiree Male Table, set back 1 year

Projection Scale: MP-2018

- **Post-Retirement Disabled Mortality**

Female: PUB-2010 Headcount Weighted General Disabled Retiree Female Table, set forward 3 years

Male: PUB-2010 Headcount Weighted General Disabled Retiree Male Table, set forward 3 years

Projection Scale: MP-2018

**PLAN ASSUMPTIONS AND METHODS****TABLE XII**

- Disability**

Representative values of the assumed annual rates of disability among members in active service are as follows:

Age	Ordinary Disability Rate	Service Disability Rate	Age	Ordinary Disability Rate	Service Disability Rate
20	.000232	.000058	40	.000484	.000121
25	.000232	.000058	45	.000868	.000217
30	.000232	.000058	50	.001716	.000429
35	.000260	.000065	55	.003564	.000891

- Retirement**

Representative values of the assumed annual rates of retirement among members in active service are as follows:

Age	Rate
≤54	.0700
55	.5000
56-60	.3000
61-65	.5000
66-69	.3000
≥70	1.000

- Withdrawal from Active Status**

Representative values of the assumed annual rates of withdrawal among members in active service are as follows:

Age	Years of Service				
	0 – 1	1 – 2	2 – 3	3 – 4	4+
20	.1800	.1200	.1000	.0700	.1071
25	.1800	.1200	.1000	.0700	.0756
30	.1800	.1200	.1000	.0700	.0536
35	.1800	.1200	.1000	.0700	.0416
40	.1800	.1200	.1000	.0700	.0321
45	.1800	.1200	.1000	.0700	.0227
50	.1800	.1200	.1000	.0700	.0132
55	.1800	.1200	.1000	.0700	.0038



PLAN ASSUMPTIONS AND METHODS

TABLE XII

3. Interest Rates

- Used for calculating all liabilities
 - 7.35% per annum

4. Salary Increase

- **Individual Compensation:**

Service	Rate
0-10	7.50%
>10	4.25%

- **Aggregate Compensation**

2.40% per year for unfunded liability bases established prior to October 1, 2017.
0.00% for bases established thereafter.

5. Marriage Assumptions

- **Percent Married:** 100% of active members assumed married at retirement.
- **Age Differences between Spouses:** Male spouses are assumed to be three years older than female spouses.

6. Expenses:

Expenses paid out of the fund, other than investment-related expenses, are assumed to be equal to the average of actual expenses over the previous two years.

7. DROP

- **Entry:** Of those assumed to retire using the Service Retirement rates, the proportion entering DROP is as shown in the following table.

Age at Retirement	Proportion Entering DROP
Under 55	0%
55-62	70%
Over 62	10%

- **Period:** DROP participants are assumed to remain in the DROP for a total of five years.

**8. Assets**

The market value of assets is adjusted to recognize, over a five-year period, investment earnings greater (or less than) the assumed investment return. The resulting Actuarial Value of Assets is limited to no more than 120% of the market value of assets and no less than 80% of the market value of assets. Details are shown in the Asset Information Section of the report.

9. Amortization Period

New Unfunded Actuarial Accrued Liability resulting from plan amendments, changes in assumptions or methods, or actuarial gains and loss are amortized over 30 years based on the plan's assumed rate of investment return. Bases established prior to October 1, 2017 are amortized as a level percentage of expected payroll, and bases established thereafter are amortized as a level dollar payment.

10. BSO Required Contribution

The required contribution for the Broward Sheriff's Office (BSO) is determined by multiplying the total required contribution rate as a percentage of payroll by the payroll for BSO employees, projected to the following year.

11. Data Sources**Asset Data:**

The asset information is taken from audited statements furnished by the Retirement Office, and adjusted to include DROP Accounts as liabilities of the Plan. The DROP Account balances are added to net asset amount shown in the audited statement. The valuation entry for benefits paid during the last years reflects benefit amounts explicitly paid from the Plan (including the payout of DROP Accounts) and does not reflect those paid into members' DROP accounts.

Member Data:

The member data is supplied by the Retirement Office. It is reviewed for reasonableness and consistency, but no audit was performed. Cavanaugh Macdonald is not aware of any errors or omissions in the data that would have a significant effect on the results of our calculations.

**Plan Definitions:**

- Plan 1:** Members hired:
- 1) Prior to June 8, 2011
 - 2) On or after June 8, 2011 but prior to December 8, 2020 and elect to make additional 3% contributions for past service retroactive to the date the member became eligible to participate
 - 3) On or after December 8, 2020
- Plan 2:** Members hired on or after June 8, 2011 but prior to December 8, 2020. Members who do not elect to make additional 3% contribution for past service will have benefits calculated under Plan 2 for service rendered from June 8, 2011 through December 8, 2020. Service accrued on or after December 8, 2020 will be calculated under Plan 1 benefit structure.

Eligibility:

Regular full-time employment with the City (at least 26 hours per week and 5 months per year), including Elected Officials, Appointees, and Senior Managers.

Earnings:

Basic compensation and regular longevity pay, increased for temporary upgrade pay. Lump sum payment at termination for unused sick leave and vacation time is not included.

Average Monthly Earnings (AME):

- Plan 1:** Monthly average for the highest completed 78 bi-weekly pay periods during employment times 1.0048.
- Plan 2:** Monthly average for the highest completed 130 bi-weekly pay periods during employment times 1.0048.

Credited Service:

Total years and completed months of service from the last date of hire to the date of termination, retirement, death, or disability.



Normal Retirement

Eligibility (Normal Retirement Date):

The earlier of attainment of age 55 with 20 years of Continuous Service, or age 62 with 3 years of Credited Service as a “regular employee” with the City.

Benefit:

Plan 1: 3.00% of AME times years of service for members retiring on or after October 1, 2021. 2.75% of AME times years of service for members retiring prior to October 1, 2021.

Plan 2: 2.00% of AME times years of service.

Maximum Benefit:

\$90,000 per year (indexed) at age 62, or 100% of AME (such earnings to exclude picked-up employee contributions per Sec. 414(h)(2), deferred compensation per Sec 457, and amounts deferred under Sec 125).

Normal Form of Benefit:

Life annuity to the member.

COLA:

Plan 1: Paid annually, on October 1 for retired members (or their beneficiaries) who have been retired for at least one year. Increase is 3% for members retiring on or after October 1, 2021 and 2% for members retiring prior to October 1, 2021. An additional 1% will be payable if either there is a netexperience gain for the year, or the City cost for the year is zero after payment of the variable COLA.

Plan 2: Paid annually, on October 1 for retired members (or their beneficiaries) who have been retired at least five years. No increase is given for eligible retirees under 55 on October 1. A 1% increase is given for eligible retirees between 55 and 64. A 2% increase is given for eligible retirees 65 or older. A “variable” increase (of not more than one percent) will be granted when the plan is sufficiently funded.



Early Retirement

Eligibility:

The attainment of 20 years of Credited Service.

Benefit:

- Plan 1:** 3.00% of AME times years of service for members retiring on or after October 1, 2021. 2.75% of AME times years of service for members retiring prior to October 1, 2021.
- Plan 2:** 2.00% of AME times years of service.

Normal Form of Benefit:

Life annuity to the member.

COLA:

- Plan 1:** Paid annually, on October 1 for retired members (or their beneficiaries) who have been retired for at least one year. Increase is 3% for members retiring on or after October 1, 2021 and 2% for members retiring prior to October 1, 2021. An additional 1% will be payable if either there is a netexperience gain for the year, or the City cost for the year is zero after payment of the variable COLA.
- Plan 2:** Paid annually, on October 1 for retired members (or their beneficiaries) who have been retired at least five years. No increase is given for eligible retirees under 55 on October 1. A 1% increase is given for eligible retirees between 55 and 64. A 2% increase is given for eligible retirees 65 or older. A “variable” increase (of not more than one percent) will be granted when the plan is sufficiently funded.

Delayed Retirement

Benefit:

- Plan 1:** 3.00% of AME times years of service for members retiring on or after October 1, 2021. 2.75% of AME times years of service for members retiring prior to October 1, 2021.
- Plan 2:** 2.00% of AME times years of service.

Normal Form of Benefit:

Life annuity to the member.



COLA:

- Plan 1:** Paid annually, on October 1 for retired members (or their beneficiaries) who have been retired for at least one year. Increase is 3% for members retiring on or after October 1, 2021 and 2% for members retiring prior to October 1, 2021. An additional 1% will be payable if either there is a netexperience gain for the year, or the City cost for the year is zero after payment of the variable COLA.
- Plan 2:** Paid annually, on October 1 for retired members (or their beneficiaries) who have been retired at least five years. No increase is given for eligible retirees under 55 on October 1. A 1% increase is given for eligible retirees between 55 and 64. A 2% increase is given for eligible retirees 65 or older. A “variable” increase (of not more than one percent) will be granted when the plan is sufficiently funded.

Drop Retirement

Eligibility:

The earlier of attainment of age 55 with 20 years of Continuous Service, or age 62 with 3 years of Credited Service as a “regular employee” with the City.

Benefit:

- Plan 1:** 3.00% of AME times years of service for members who enter DROP on or after October 1, 2021. 2.75% of AME times years of service for members who enter DROP prior to October 1, 2021.
- Plan 2:** 2.00% of AME times years of service.

Normal Form of Benefit:

Life annuity to the member.

COLA:

Same as Normal Retirement, except that the COLA is first credited and paid on the October 1 the member is eligible to receive a COLA after leaving employment (exits DROP). Tier 1 members participating in the DROP on October 1, 2021 are eligible for the 3% COLA after leaving employment.



DROP Period:

The Member may remain in the DROP for up to five or eight years, depending on age and service.

Contributions:

Member contributions cease when Member enters DROP.

DROP Interest:

DROP account balances are credited at the beginning of each month with interest at $1/12^{\text{th}}$ of the rate assumed in the actuarial valuation for that year.

Disability Retirement – Service Incurred

Eligibility:

Members are immediately eligible for a Disability Retirement Benefit where the Disability results from an act occurring in the performance of service with the City of Pompano Beach.

Disability Retirement eligibility is forfeited upon entry into the DROP.

Disability Definition:

Total and permanent disablement and unable to earn at least 75% of regular earnings. A member who is eligible for full primary Social Security old age benefits is not eligible.

Benefit:

60% of Earnings.

Normal Form of Benefit:

Life annuity to the member.



COLA:

- Plan 1:** Paid annually, on October 1 for retired members (or their beneficiaries) who have been retired for at least one year. Increase is 3% for members retiring on or after October 1, 2021 and 2% for members retiring prior to October 1, 2021. An additional 1% will be payable if either there is a netexperience gain for the year, or the City cost for the year is zero after payment of the variable COLA.
- Plan 2:** Paid annually, on October 1 for retired members (or their beneficiaries) who have been retired at least five years. No increase is given for eligible retirees under 55 on October 1. A 1% increase is given for eligible retirees between 55 and 64. A 2% increase is given for eligible retirees 65 or older. A “variable” increase (of not more than one percent) will be granted when the plan is sufficiently funded.

Disability Retirement – Non-Service Incurred

Eligibility:

Total and permanent disablement, 7 years of service, and unable to be gainfully employed. A member who is eligible for full primary Social Security old age benefits is not eligible.

Disability Retirement eligibility is forfeited upon entry into the DROP.

Benefit:

Accrued pension, subject to a minimum of 25% of Earnings.

COLA:

- Plan 1:** Paid annually, on October 1 for retired members (or their beneficiaries) who have been retired for at least one year. Increase is 3% for members retiring on or after October 1, 2021 and 2% for members retiring prior to October 1, 2021. An additional 1% will be payable if either there is a netexperience gain for the year, or the City cost for the year is zero after payment of the variable COLA.
- Plan 2:** Paid annually, on October 1 for retired members (or their beneficiaries) who have been retired at least five years. No increase is given for eligible retirees under 55 on October 1. A 1% increase is given for eligible retirees between 55 and 64. A 2% increase is given for eligible retirees 65 or older. A “variable” increase (of not more than one percent) will be granted when the plan is sufficiently funded.

**Pre-Retirement Death Benefit – Basic****Benefit:**

1 times annual earnings (payable in monthly installments over four years) plus a refund of contributions with interest. Alternatively, for members eligible for Early or Normal Retirement, or who have a vested benefit whether still actively employed by the City or not, the pension is payable to the beneficiary for 10 years as though retirement occurred on the date of death under Option 2, Ten Year Certain and Life (no reduction for early retirement if death occurs prior to normal retirement).

COLA:

Plan 1: Paid annually, on October 1 for retired members (or their beneficiaries) who have been retired for at least one year. Increase is 3% for members retiring on or after October 1, 2021 and 2% for members retiring prior to October 1, 2021. An additional 1% will be payable if either there is a netexperience gain for the year, or the City cost for the year is zero after payment of the variable COLA.

Plan 2: Paid annually, on October 1 for retired members (or their beneficiaries) who have been retired at least five years. No increase is given for eligible retirees under 55 on October 1. A 1% increase is given for eligible retirees between 55 and 64. A 2% increase is given for eligible retirees 65 or older. A “variable” increase (of not more than one percent) will be granted when the plan is sufficiently funded.

Withdrawal – Non Vested**Eligibility:**

First day of work, up to the earlier of 7 years of City service or 5 years of Senior Management Service for regular employees only.

Benefit:

Accumulated contributions with 3% interest.

Form of Benefit:

Lump sum.



Withdrawal – Vested

Eligibility:

Regular employees – at least 7 years of service.

Senior Managers – earlier of 7 years of City service and 5 years of Senior Management Service.

Elected Officials and Appointees – at least 5 years of service.

Benefit:

A vested benefit deferred to regular normal retirement date. Alternatively, a regular employee or Senior Management participant may withdraw the accumulated contributions and forfeit the deferred vested benefit.

Member Contributions

Contributions:

Elected Officials and Appointees

No member contributions. However, the City will make contributions at the same rate that applies to Regular Employees on behalf of these participants. These contributions are not eligible for refund upon termination.

Regular Employees and Senior Managers

Plan 1: 10.0% of earnings.

Plan 2: 7.0% of earnings for service earned between June 8, 2011 and December 7, 2020. 10% of earnings beginning December 8, 2020. Members in Plan 2 were provided with the option to make an additional 3% member contribution for past service retroactive to the date of participation and receive benefits under the Plan 1 benefit structure.

Interest Crediting Rate:

3% per year.



Optional Forms of Payment

Option 1:

Joint and last survivor option.

Option 2:

Ten-Year Certain and Life option.

Additional Provisions

Reentry Provision:

Credit for prior service is granted in full upon repayment of all monies refunded to the member with interest at the assumed interest rate for actuarial purposes.

Second Retirement Provision:

Members may retire and return to work as a regular employee. Prior pension payments are continued during the period of reemployment. A second benefit is earned based solely on the second period of employment, provided the employee worked at least three years during the second period of employment.



The following Plan Amendments have been adopted within the past few years. Amendment changes that have first been reflected in this valuation are shown in bold print:

1. Effective June 8, 2011

- a) For members hired on or after June 8, 2011, average monthly earnings is the average of the highest 130 bi-weekly pay periods times 1.0048.
- b) For members hired on or after June 8, 2011, the monthly retirement benefit is 2.0% times average monthly earnings.
- c) For members hired on or after June 8, 2011, the contribution rate is 7.0% of earnings.
- d) For members hired on or after June 8, 2011, a member is eligible for a COLA on their fifth anniversary of retirement. No increase is given for eligible retirees under 55 on October 1. A 1% increase is given for eligible retirees between 55 and 64. A 2% increase is given for eligible retirees 65 or older. A “variable” increase (of not more than one percent) will be granted when the plan is sufficiently funded.

2. Effective January 13, 2015

- a) Members are 100% vested upon completion of 7 years of continuous service with the City.

3. Effective December 8, 2020:

- a) Members hired on or after June 8, 2011 but prior to December 8, 2020 were given a one-time election to make additional 3% contributions for past service retroactive to the date the member became eligible to participate. Members who elect to make retroactive contributions will receive benefits for all service calculated under the Plan 1 benefit structure. Members who do not elect to make the additional 3% contribution for past service will have benefits calculated under Plan 2 for service rendered from June 8, 2011 through December 8, 2020 and service accrued on or after December 8, 2020 will be calculated under Plan 1 benefit structure.
- b) Effective December 8, 2020, all future benefit accruals will be calculated under the Plan 1 benefit structure.

4. Effective December 14, 2021:

- a) The monthly retirement benefit for any member retiring on or after October 1, 2021 is equal to 3.00% of average monthly earnings times all years (and completed months) of continuous service earned by Tier I members and Tier II members who have paid the additional 3% member contribution for all future and past years of service.
- b) The COLA is 3.00% for Tier 1 members participating in the DROP on October 1, 2021 and all active Tier 1 members who retire on or after October 1, 2021 who have been retired for at least one year.
- c) Repayment of prior service credit may be paid at any time prior to the employee entering DROP or retiring and separating service from the City.
- d) Members who are eligible to retire or enter the DROP, but who have not yet elected to retire or enter the DROP, may elect to purchase additional service time needed to round-up his/her current year of service prior to retiring or entering the DROP. If a member elects to purchase additional service time, the member agrees to pay all costs including the city’s portion, prior to retiring or entering the DROP.